



*Lagoon 55 #106
(summer 2025)*

*4 Cabin Owner's
Version*

Lagoon 55 #106



The incredible Lagoon 55 is the result of decades of innovation and design! The open cockpit, which looks like a terrace on the water, offers an unobstructed view of the sea and perfectly combines indoor and outdoor spaces. Thanks to the spacious flybridge, modern sailing equipment and spacious living areas, the Lagoon 55 is ideal for long cruises and socialising. With options for up to six cabins and a luxurious owner's suite, the Lagoon 55 offers maximum comfort, while the modern hull design and enhanced performance contribute to an unforgettable sailing experience.

Lagoon 55 #106 was delivered in summer 2025 and only delivered from Bordeaux (FR) to Kiel (Germany). So the boat was never used by the owner, all beds are still covered in plastic sheets, so virtually unused.



1.990.000 excl. VAT.



Kiel, Germany



*Solar panels fitted on the
bimini hardtop + hydraulic
tender lift & IROKO wood in
the cockpit + transoms +
flybridge*

Technical Specs



Year of build	2025 (launched in July)
Length	18,38m
Beam	9,00m
Draft	1,60m
Displacement	29,2t
Engines	Nanni
	2 x 110 hp
Engine hours	Approx. 200
Cabins	4
Bathroom	4
Fuel	1.100 l
Freshwater	960 l
Location	Kiel, Germany



Layout



4 Cabin/ 4-bathroom Owner's layout

Layout

- *Version 4 cabins, 4 bathrooms, 2x 80 HP (Yanmar 4JH80)*
- *Interior: Wood interior in Alpi White with Fortezza floor*
- *Layouts: Sliding door in the owner's cabin between living and sleeping areas*
- *Surcharge for electrically adjustable salon table*
Additional Equipment
- *Elegance Line*

Essential Equipment

- *230V electrical system with monitoring display, 63A shore power, and USB outlets*
- *Battery charger*
- *Navicolor monitoring display*
- *Surcharge for electric winch 60.2 for the mainsail*
- *stainless dinghy lift system with manual winch*
- *Bow baskets with wooden seats and railing openings left and right*
- *Helm seat cushions*
- *Indirect lighting in cabins and saloon*
- *Fusion Apollo MS-RA670 player with 4 speakers*
- *Water filters*
- *Hatches openable in aft cabins with curtain*

Comfort Equipment in addition to Essential Equipment

- *Freshwater shore connection*
- *Deck wash pump with connections in the forward cockpit and starboard stern area*
- *Electric freshwater toilet*
- *Fans in cabins and saloon*
- *Indirect deck lighting in the cockpit, aft, and flybridge*
- *Remote control for anchor winch with chain counter at the helm*
- *Cockpit fridge 70 L*
- *Pantry accessory and storage set*

Upholstery and carpet

- *Salon upholstery*
- *Grand Comfort Naturen*
- *Exterior upholstery: Dark Grey/Graphite ambiance*
- *Cockpit rear and front*
 - *Rear cockpit upholstery*
- *Upholstery for front cockpit*
 - *Flybridge Sun loungers upholstery for flybridge*

Sails & Rigging

- *Mast and boom: White lacquered aluminum mast and aluminum canoe boom*
- *Winches and Equipment All winches electric + electric traveler*
- *Code 0 equipment + electric furler*

Deck Equipment

- *Tender lift system, hydraulic platform with remote control*
- *Boarding ladder*
- *Lighting*
 - *2x LED spots in the stern area*
 - *1x*
 - *4x underwater spots*



Aft area

- *Front and rear cockpit with wood cladding*
- *Surcharge for 2 foldable wood cockpit tables with covers*
- *Gas grill option in stern area*
- *Cockpit covers with windows*
- *Cockpit sun covers*



Front cockpit

- *Additional seating at stern and port for the forward cockpit*
- *Sun sail with carbon fittings for the forward cockpit*



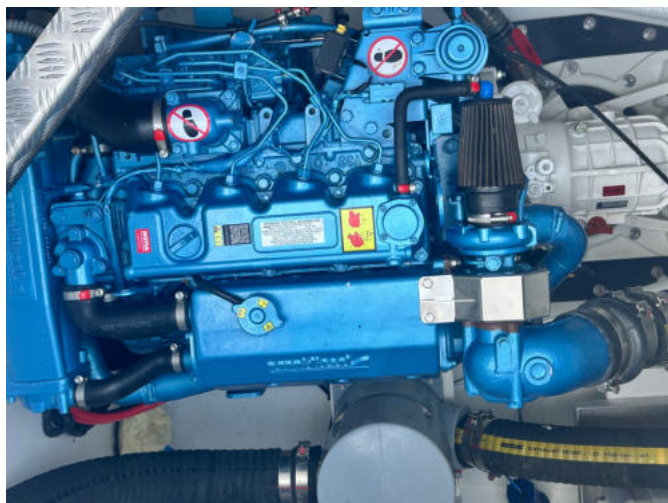
Flybridge

- *Flybridge floor with Iroko wood*
- *Bar option on the flybridge (sink and 70L fridge)*
- *1x*
- *Foldable wooden table on the flybridge*
- *Composite Bimini for the Flybridge with LED lighting*
- *1x*
- *Side screens for the Composite Bimini*



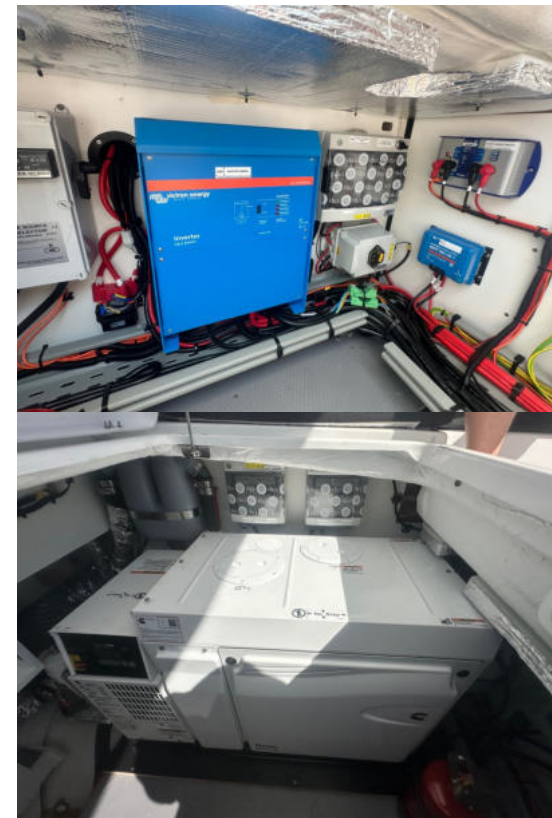
Engines

- *Surcharge for 2x Nanni 115 HP engines (Nanni N4-115) with electric engine control*
- *Bow thruster 24V, 170 KGF on starboard. Includes additional batteries (4x) and charger*
- *4-blade folding propellers for 115 HP Nanni engines*



Electrical Equipment

- *ONAN generator 17.5 kVA*
- *Inverter 24/230V 5000W*
- *Solar panels on the Composite Bimini 8x115W (Composite Bimini required)*
- *Yacht Management System Water Circulation System Gray water tanks: 2x 120L*



Interior Equipment

- *Large forward side-opening window in saloon*
- *Electrical Equipment Saloon*
- *230V dishwasher (14 sets)*
- *Backbenches*
- *Washing machine 230V Miele 9kg*
- *Dryer 230V Miele 7kg*
- *Curtains and Blinds*
- *Blinds for salon windows*
- *Slatted frames*
- *Slats under the mattresses, Version 4 cabins*
- *Air Conditioning and Heating*
- *Webasto air conditioning 220V Version 4 cabins*
- *Electronics, Hi-Fi & Communication*

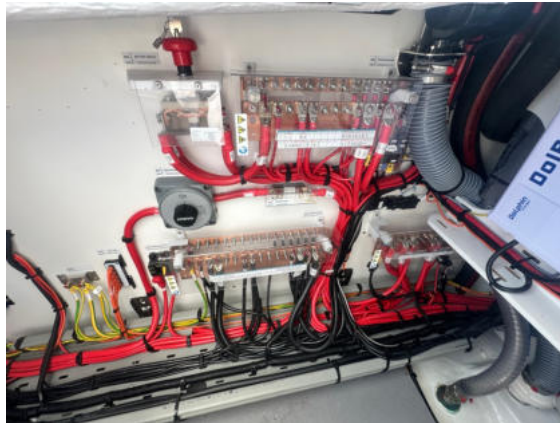


Electronics

- *Raymarine navigation package*
- *Multifunction display i70s at helm*
- *Autopilot P70s + ACU-400 control unit + Gyro compass*
- *Speed/Depth/Temp transducers*
- *Wind sensor*
- *VHF radio Ray90*



Engines and power supply



Owner's Cabin STB side aft



Portside Guest Cabin



Starboard Guest Cabin



Saloon



Exterior



Exterior



Why a Lagoon catamaran?



Pros:

- World market leader with over 7,000 catamarans built
- Support from the financially strong Beneteau Group
- High resale value through global brand awareness
- 230+ certified service partners
- Efficient spare parts service - available worldwide within a few days
- World-class service centers for maintenance, warranty, and optional equipment
- Support for international events such as the Transatlantic Rally ARC



Lagoon catamarans combine innovative design, excellent comfort and reliable performance. Whether for a private cruise or for charter, Lagoon stands for quality and user-friendliness - worldwide.

Why a Lagoon catamaran?



Smart Sailing

All sailing manoeuvres are controlled from the helm station

The engines are spaced far apart to make it easier to maneuver in the harbor

Two engine compartments ensure safety and redundancy

The trampoline and the middle beam provide stability and comfort



Lagoon stands for peace of mind, global support and effortless sailing - in style.

Mehr zur Lagoon 55



<https://www.lagoon-catamaran.de/gebrauchtboote/detail/lagoon-55-4-kabinen-eignerversion.html>



Lagoon Katamaran Nord GmbH

Börn 6 | 24235 Laboe

Tel. +49 4343 421042

E-mail: info@lagoon-katamaran.de